

ACCESSORIES

Chamberlain offers a full range of accessories for your garage door opener to provide added safety and convenience for your home.

Extra Remote Controls

With rolling code security technology, your private security code is pre-programmed at the factory never to be repeated.



Single Channel Remote Control with Rolling Code

Opens your garage door with a single button. Can be mounted in your car using the visor clip. **84330AML.**



3-Channel Mini Remote Control with Rolling Code

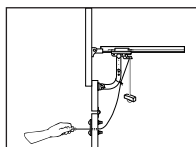
A miniature version of our standard size remote control. Small enough to fit in your pocket, handbag, or on a keychain. **84335AML.**

Enhanced Safety



The Protector System™

Projects an invisible beam across door opening and automatically reverses door if anything interrupts it while the door is going down. **770AML.**



Emergency Quick Release Lock

A manual key release system which disengages the motor from outside the garage door. A necessity for a garage without access doors. **1702AML.**

ACCESSORIES

Optional Control Devices



Wireless Keyless Entry with Rolling Code

Easy Secure access. Enter your garage from outside without using your remote control or keys by entering your 4-digit code. **8747AML.**



Multi-Function Control Panel with Illuminated Push Button

Allows you to open/close your garage door, program remotes and operate opener lights. Locks out all outside radio signals for added safety while you're away. Features adjustable light timer with 1½, 2½, 3½ and 4½ minute settings. **845AML.**



Outside Key Switch

Allows operation of your garage door opener without using a remote control. **760AML.**



Evercharge™ Standby Power Unit

Ensures the garage door remains operational in the event of a power blackout. Suits MLR750. **C475.**

Special Orders

Accessories that are out of stock can be purchased through the special orders counter.

As the world's leading garage door opener specialist, we give you more value for your money.

Chamberlain MotorLift™ Garage Door Openers are the strongest, most dependable DIY systems on the market today with the enhanced features you want most.

At Chamberlain®, we have spent years finding out what you want and need in a garage door opener system. This research has driven us to find new ways of extending product durability, reliability and quality. That's why we make more of them than any other manufacturer. In fact, over 50% of the garage door openers distributed in the world come from Chamberlain.

Each Chamberlain MotorLift™ model is individually tested with the industry's most advanced computerised test equipment to meet our exacting standards and to meet or exceed EU Safety Standards.

Why you need a Garage Door Opener

- ✓ Open your garage door from the safety and security of your car
- ✓ Advanced remote controls provide anti-burglary protection
- ✓ Opener light provides added garage safety and convenience

Available at
BUNNINGS
warehouse

Garage Door Openers



Advanced Safety,
Security and Convenience

CHAMBERLAIN™
MotorLift™

STANDARD FEATURES

Strength and Durability

Chamberlain MotorLift™ garage door openers are strong, reliable and easy to install. Engineered specifically for the DIY market, the units are available for both sectional and rolling garage doors.

Sectional Door Openers

Powerful state-of-the-art design with an ultra-quiet belt drive.

Rolling Door Openers

Slim, modern and designed to fit most new or existing doors.

Engineered for Safety

Automatic Force Sensing & Safety Reverse

Reverses garage door automatically if obstructed going down, and stops door if obstructed going up.

Manual Release Handle

For manual operation of door in case of power failure.

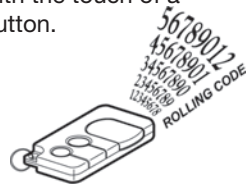
Built-in Security

Remote Controls with Rolling Code Technology

Control your garage door from the safety and comfort of your car. Prevents code theft and code duplication ensuring your home will be safe and secure.

Simple One Touch Programming

Lets you electronically program security codes with the touch of a button.



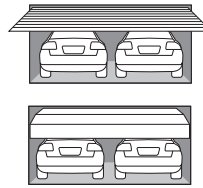
MotorLift™ Garage Door Openers meet all EU & IEC safety standards as of the date of manufacture.

MotorLift ML750



2-Year Motor Warranty

- For standard single and double sectional doors
- Maximum door area 12.5m² (do not exceed max. door area)
- Ultra-quiet belt drive system with C rail
- Stores up to 12 remote controls



Includes:

- Two 3-channel mini remote controls
- One 1-channel car visor remote control

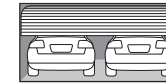


MotorLift MLR750



2-Year Motor Warranty

- For standard single and double roller doors
- Maximum door area 12.5m² (do not exceed max. door area)
- Stores up to 64 remote controls



Includes:

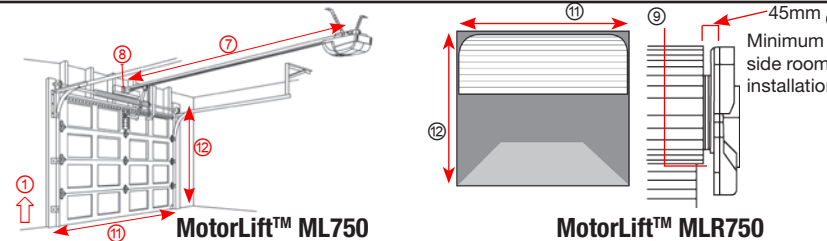
- Two 3-channel mini remote controls
- One 1-channel car visor remote control



TECHNICAL SPECIFICATIONS

$$(m^2 = A \times B)$$

	MotorLift™ ML750	MotorLift™ MLR750
1	Maximum pull force	700N
2	Input voltage	230-240V/50Hz/115W
3	Pull force	70kg
4	Lighting	21W
5	Light delay time	2.5 mins.
6	Hanging weight	16kg
7	Total Length	3.2m
8	Minimum headroom required	30mm
9	Min. curtain to drum wheel distance	N/A
10	Minimum side room	45mm
11	Maximum width of door (A)	5.5m
12	Maximum height of door (B)	2.2m
13	Remote control	433MHz AM Rolling Code

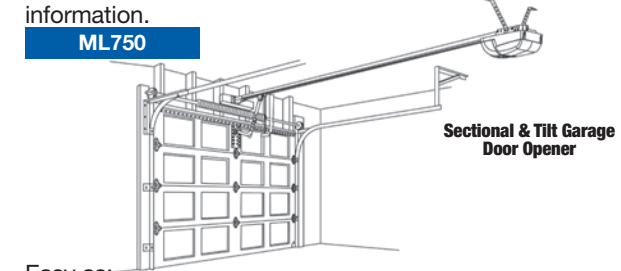


SIMPLE TO INSTALL

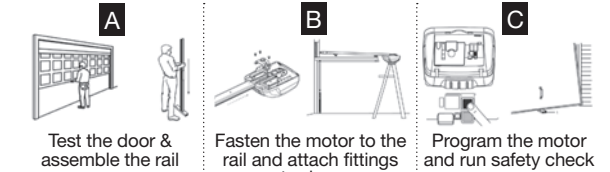
Chamberlain MotorLift™ DIY garage door openers are designed and manufactured to be reliable, easy to install, functional and quiet.

We provide a state of the art DC motor, remote controls, simple step-by-step instructions, screws and fasteners. All you need are your own tools and time. Refer to the instruction manual for more detailed information.

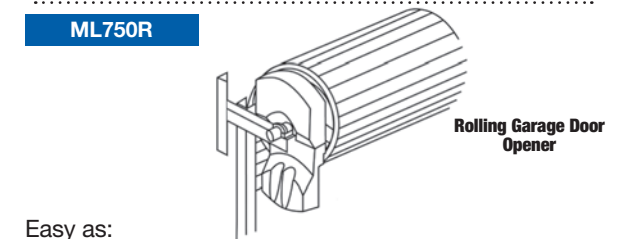
ML750



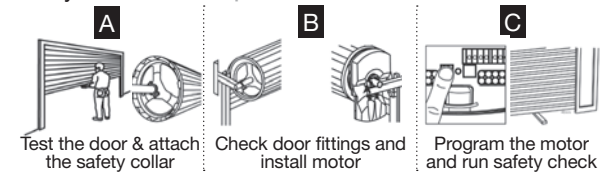
Easy as:



ML750R



Easy as:



Chamberlain reserves the right to make design or specification changes without notice.

CHAMBERLAIN®

i 1800 MOLIFT
NZ 0800 MERLIN